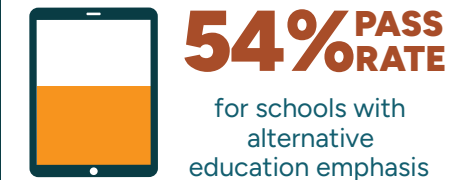
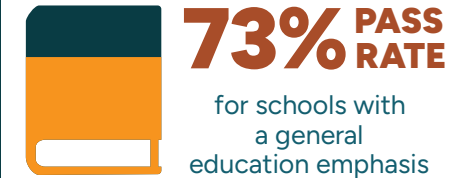
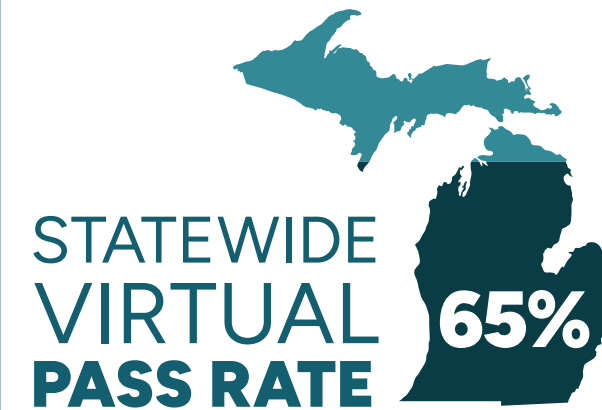
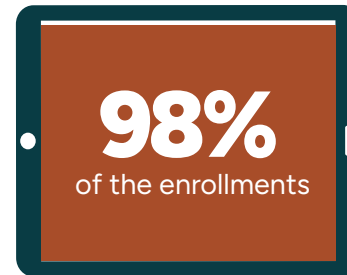
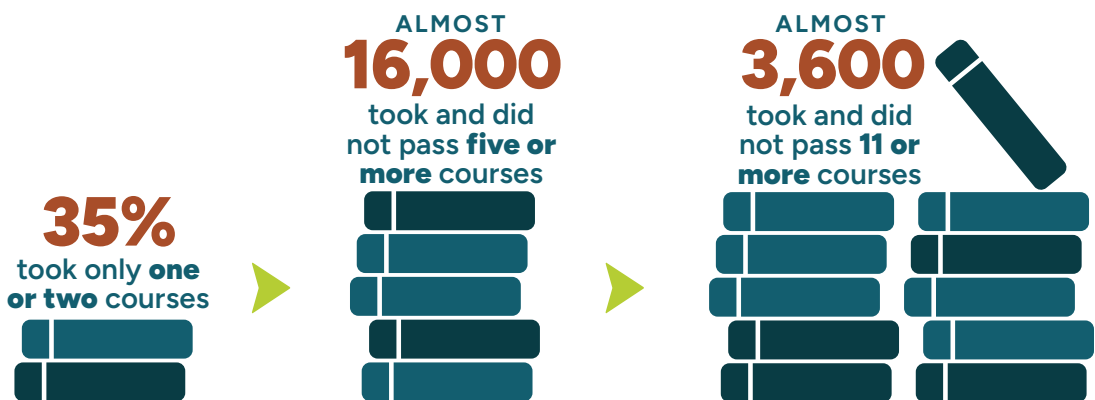
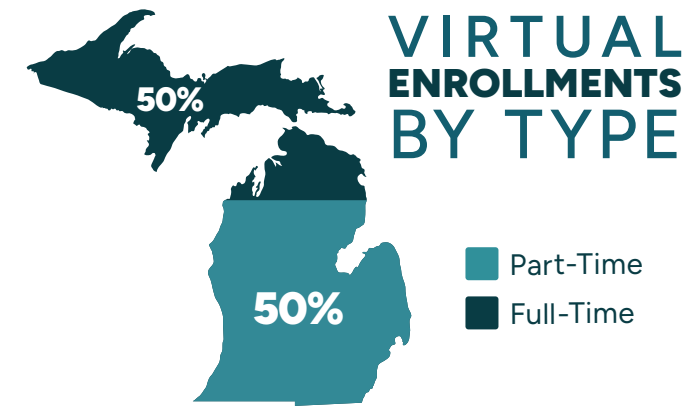


SCHOOLS WITH 100 OR MORE VIRTUAL ENROLLMENTS ACCOUNTED FOR



OF THE CLOSE TO 24,000 STUDENTS who did not pass any of their virtual courses



POVERTY RATES

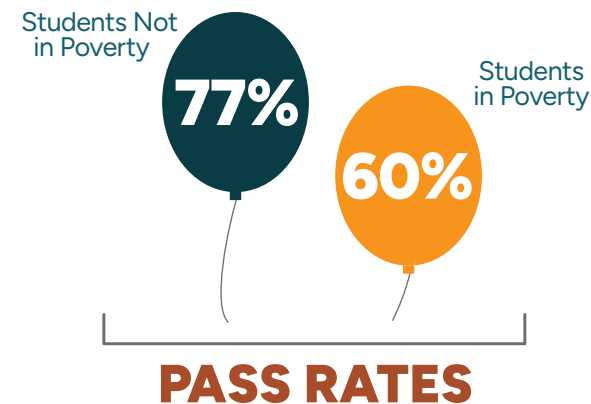
61% **69%**



of Students



of Enrollments



81% PASS RATE for students taking 1-2 virtual courses

63% PASS RATE for students taking 5+ virtual courses

